

# Plain Print

Volume 34, Number 9

May 2007

## Inside this Issue

May Program .....	1
May Class Registration.....	1
Committee Reports for 2006-2007 ...	1
Committees for 2007-2008 .....	1
President's Message .....	2
Quiltfest 2006 article.....	2
Sutherland Gallery Exhibit .....	2
Hearts and Hands Afternoon Workshop .....	2
Piecemakers.....	2
Evening Stars evening workshop .....	2
Next Newsletter Deadline .....	2
Treasurer's Report.....	3
2007 Santa Socks .....	3
Plain Print by Email .....	3
April 2007 Minutes.....	4 and 5
Ricky Tims Super Seminar .....	5
Membership Renewal Time.....	5
Award photos.....	6
Discover Nebraska .....	6
Friendship Block .....	6
Fall Retreat .....	7
Quilt Challenge .....	7
Lost and Found.....	7
Advertisements.....	5 and 8
Officer listing.....	8



## Lincoln Quilters Guild Quilting since 1973

Meeting the *second Monday*  
of each month

**September through May**  
(except December)

**Gathering at 6:30 p.m.**  
**Program & Meeting**  
**at 7:00 p.m.**

College View Seventh-Day  
Adventist Church  
4015 South 49<sup>th</sup> Street  
Lincoln, Nebraska

On the Internet at  
[www.lincolnquiltersguild.org](http://www.lincolnquiltersguild.org)

## May Speaker

### Stella Schaffert • "A Quilter's Challenge" Monday, May 14 • 7 pm

'A Quilter's Challenge' trunk show came about from Stella using the local guilds' challenge projects to further her experiences in quilting. After participating in a few challenges, just following the rules given, she decided to push the limits of each project a little further. Making the decision to include a personal challenge in each project made all the difference in how she now quilts. That personal challenge was to do something in every project that she had not done before and ask herself "What if?" This trunk show will show you her journey through quilting, showing how she likes to document events or things, plus some of the challenge projects.

Registrations are being excepted for the May 2007 class with *Stella Schaffert*. She will be teaching "Holiday Table Topper". It's not too early to start a holiday project in May. If you get started now, you may even finish one or more of these pieced and paper foundation pieced quilts for holiday gift giving!

## May 15, 2007 Class Registration

Who/What: *Stella Schaffert* teaching "Holiday Table Topper"

Date/Time/Cost: Tuesday, May 15, 2007  
9:00 a.m. to 4:00 pm  
\$30/per person

Location: Sheridan Lutheran Church 70<sup>th</sup> and Old Cheney • Room 113

Your Name: \_\_\_\_\_

Your Address: \_\_\_\_\_

Your Phone #: Daytime \_\_\_\_\_ Night \_\_\_\_\_

Email \_\_\_\_\_

**Send check payable to LQG plus a business sized self addressed stamped envelope to**  
Becky Haynes • 5720 Caymus Court • Lincoln NE 68526 • 483-7020 • haynes1213@aol.com

## Attention Committee Chairpeople for 2006-2007!

Please bring all paperwork related to your committee to the May meeting. That could include a folder with a listing of your committee's responsibilities and reports from past years. Please include a report of what your committee did this year in terms of planning/carrying out activities and copies of any handouts given to committee or guild members. If it can be a typed report that is great, but I will gladly accept a handwritten report. What is needed is a record of what you did, what worked well, and any changes that you would suggest to the next chairperson for the committee. This information can be given to Judy Lane. If you have questions about this report, please call or email Judy at 466-4541 or [judithblane@yahoo.com](mailto:judithblane@yahoo.com). Thank you for helping the new chairperson in this way!

## Notice to Committee Chairpeople for 2007-2008

Reports from current committee chairpeople will be turned in at the May meeting. After that time, the folder for your committee will be prepared to be given to you. Kate Laucomer and Judy Lane have begun to review committee responsibilities and will finish the process in June. We felt it was time to take a look at the committee descriptions to be sure they are saying what we have been asking people to do. Judy will then be responsible for getting your folder to you in plenty of time for preparing for the 2007-08 guild year.

Once again, thanks to all of you who have said yes to serving on a committee. Our guild is large and very active. All of us working together will make for an enjoyable and productive year for Lincoln Quilters Guild!

OFFICIAL PUBLICATION  
OF THE  
**LINCOLN QUILTERS GUILD**  
LINCOLN, NEBRASKA

Published nine months of the year:  
August, September, October,  
November, January, February, March,  
April, and May.

**Editor and Layout:**

Lin Gowin-O'Brien

**Circulation:** Carol Curtis

The deadline to submit articles and  
ads for inclusion in the *Plain Print* is  
the Wednesday following the Guild  
meeting.

**Next September  
newsletter deadline:**

**August 15**

**ADVERTISING**

**Business Ad Rates:**

A 3 1/2 " x 2" sized ad is \$20 for the  
first month and \$15 per month for  
subsequent months.

A 3 1/2 " x 4" sized ad is \$35 for the  
first month and \$30 per month for  
subsequent months.

Ads must be camera-ready.

**Classified Ad Rates:**

Any individual may place a classified  
quilt-related ad in the "Quilters'  
Exchange" at a cost of \$5.00 for 30  
words. Send exact text for ads.  
Send articles and ads with payment  
(payable to "Lincoln Quilters Guild")  
to:

Lin Gowin-O'Brien  
642 S. 28th Street  
Lincoln, NE 68510  
Telephone: (402) 477-6545  
Cellular: (402) 304-8438  
Email: Linobrien@netscape.net

## President's Message

Where to start?

I discovered something at the April meeting. I probably already knew it before. The "competition" gene is missing from my DNA!!! I absolutely loved seeing the quilts made by Betty Lenz. They were: gorgeous, beautiful, stunning... insert any similar adjective you want. I also know it is NOT within me to spend a year making ONE quilt. I am a definite process person. I enjoy picking the fabrics, touching the fabrics, doing the piecing and quilting. But I also want to finish! I am not enough of a detail person to want a perfect quilt. That sounds like stress to me. I am, however, very grateful that there are people like Betty so we can see their incredible quilts and ooh and aah!

This leads me to another fact I learned this last month. I am absolutely blown away by the incredible talent we have in our own guild!!!!!! Our challenge quilts were: gorgeous, beautiful, stunning, creative, funny, heart-touching... insert any similar adjective you want. Congratulations to everyone who finished their challenge quilt. Hopefully, you will all bring the quilts to the May meeting show and tell so we can match up makers with their delightful quilts.

Happy stitching!

Kate Laucomer



### Lincoln Quiltfest 2006

## Bloomin' Quilts

Quilters Newsletter Magazine has printed a photo and article of the Artful Dwellings featured at Quiltfest! It appears in the May 2007 issue, page 16. It's in their new feature "What's New in Quilting." A copy is at the Guild Information table.



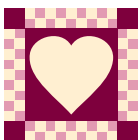
### Sutherland Gallery Exhibit

A national traveling exhibit will be in Omaha August 3-19. The exhibit consists of two parts. There are 50 quilts made by women in "Women of Biblical Proportions". This is during the Ricky Tims' Seminar.

Then August 21-31 50 quilts made by men in the "Men of Biblical Proportions" will be displayed.

### Sutherland Gallery

in the Cathedral Cultural Center  
701 N. 40th Street, Omaha, Nebraska  
11 am to 4 pm • free admission



## Hearts and Hands

### Afternoon Workshop

Beginning in January 2007, meetings will start meeting at 1:00 pm in Room 008. This room is just down the hall from the Fellowship Hall where we have been meeting for some time.

**Christ Lutheran Church  
Fellowship Hall**

**4325 Sumner Street**

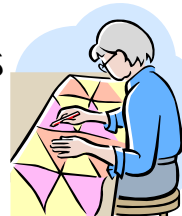
**1:00 pm**

**4th Monday of the Month**

For more information call: Judy Edwards  
489-7395 or Arlene Lynn 466-5148.

## Piecemakers

A newer small group that meets monthly. All levels of quilters are welcomed.



Meetings will be

**4th Thursday of the month**

at 1:00 in the afternoon

**Sew Creative**

5221 S. 48th Street

Call *Willa Smith* at 420-2422 if you have any questions. *Please* leave a message and I will return your call. Or you can email me at [rswd660@inebraska.com](mailto:rswd660@inebraska.com)

## Evening Stars



### Evening Workshop —

Meets the 4th Monday of each month, at 6:30 pm at the **Sew Creative** in the Sutter Place Mall. 5221 S. 48th Street.

During June, July and August this group also meets on the 2nd Monday at the same time and location.

For more information, contact Dana Atteberry at 474-1150.



# LQG Treasurer Report

## March 2007

Beginning Checking Balance 3/1/2007 \$19,303.31

### INCOME

Checking Interest	5.74
Cuddle Quilts	33.33
Discover Nebraska	33.34
Santa Socks	123.33
Membership	15.00
Memorial Income	65.00
Program and Classes	95.00
Spring Bus Trip*	3,300.00
Mini Raffle Quilts	116.50
<b>TOTAL INCOME</b>	<b>\$3,787.24</b>

### EXPENSES

Administration	19.95
Award Pins	318.33
Meeting Room Rent	150.00
Memorials Given	45.00
Library Books	157.39
Spring Bus Trip*	3,300.00
Cuddle Quilts	92.45
Discover Nebraska	96.86
Newsletter postage and printing	244.63
Resource Room Rent	100.00
Special Projects/Birthday Month	24.22
Programs and Classes	\$328.98
<b>TOTAL EXPENSES</b>	<b>\$4,877.81</b>

OVERALL TOTAL (\$1,090.57)

Ending Checking Account Balance 2/28/2007 \$18,212.74

(note: \$311.52 is Fall Retreat to be carried to next year)

Total CD's (matures 10-29-07) 10/29/2007 \$19,518.68

TOTAL ASSETS 3/31/2007 \$37,731.42

\*Spring Bus Trip is self-funded

Dani Hecker

Treasurer 2006-2007

## Santa Socks 2007



THANK YOU to everyone who brought donations for the Santa Socks. Your response has been WONDERFUL! We are still encouraging everyone to shop the after season sales, garage sales or thrift stores. PLEASE keep the items donated of a new quality like what we would enjoy in our own stockings.

We also have a list of items needed. The small soaps/shampoos are still needed at the Mission but most of the women are in need of regular size hair care items. A big need is also First Class POSTAGE STAMPS. (Go together with a friend on this.)

REMEMBER you can bring these items any month or stuff a dollar or two into our big sock.

Here are the suggested items per month.

**May:** Postage stamps, notecards, etc.

**September:** Back to school items, markers, crayons, pens, color books, journals, etc.

**October:** Pocket calendars for the new year, hand lotions, hand sanitizers, etc.

**November:** Santa Socks/Sacks and lots of dollars for voting plus any stocking stuffers.

Again, thank you for your support!

Gloria Smith and Sandy Gruntorad

**Remember, we will accept these items throughout the rest of this year.**

Combs/brushes	Coloring books/crayons
Lip Gloss/Chap Sticks	Word books, crosswords, etc
Make-up	Small games, puzzles
Nail Polish	Story books
Toothbrushes	Small stuffed animals
Small toothpaste	Hair items
Small Kleenex packets	Pony tail holders, etc.
Journals, note pads, pens	Jewelry items
Note Cards	Small packs of gum or candy
Christmas ornaments	

## Plain Print by Email

We're switching over to a new system. We have established a Yahoo Group named LincolnQuiltersGuild. We're trying to move into this century and make it easier for Plain Print and other important messages to be sent out to LQG members.

Each person signed up to receive Plain Print by email will receive an email from [PlainPrint@LincolnQuiltersGuild.org](mailto:PlainPrint@LincolnQuiltersGuild.org). It will have a link to click on that takes you straight to the LQG web site Newsletter page. You select the newsletter you want to print. Click on it. It loads on Adobe Reader. You can read it or print it.

NO more downloading. NO more tying up your mailbox with large emails.

It will take Kate about one month this summer to get the membership's email addresses switched over to the Yahoo Group. You may receive an email from [LincolnQuiltersGuild@yahogroups.com](mailto:LincolnQuiltersGuild@yahogroups.com) asking you if you'd like to join this group. Please respond and follow directions to do this.

You could help Kate greatly by joining our group on your own. (It will save Kate a lot of typing!) Go to the group web site at:

<http://groups.yahoo.com/group/LincolnQuiltersGuild/>

1. Click on the **Join This Group** button on that page

(blue box, right side of screen).

2. If you are not signed in, you will be asked to enter your Yahoo! ID. If you do not have a Yahoo! ID, you can register by clicking on the **Sign Up** link.

3. Set your membership preferences. When you join, you can choose a profile you'd like to display to the group, select the email address at which you'd like to receive group messages, choose how you receive group messages, and more.

Then wait for the Plain Print notice to be delivered to your email box this August!

**One last request.** Would all of you with email addresses who are currently receiving the Plain Print by US Postal Mail please consider trying this system at least once? It's very easy to use... all you need is Adobe Reader which can be downloaded free from the internet. There's a link on the newsletter page of our LQG web site to get Adobe Reader if you don't have it. Want to try it and see? Type in the following address: <http://www.lincolnquiltersguild.org/html/newsletters.html> It will take you to our Newsletter page on our web site. Click on any newsletter. It should load up on Adobe Reader. Under File (top left of screen) click on print. It's just that simple!!!

# Minutes of the Lincoln Quilters Guild – April 9, 2007

## College View Seventh-Day Adventist Church – Lincoln, Nebraska

President Kate Laucomer, called the April 9, 2007 meeting to order at 7:00 pm.

The Challenge quilt winners were presented before our program. Rosalind Carr announced there were 31 finished quilts. The celebrity judges were introduced. They were Jim McShane, Linda Hillegass, and LQG member Willa Smith.

The Challenge winners were: Chris Taylor, first place; Lois Wilson, second place; Sandy Anderson, third place; and Phyllis Higley, Viewers' Choice. Each of the winners received a Reading Bucket with prizes inside.

Elizabeth Sterns introduced Nicole Zink of the Lincoln Library Foundation. She gave a talk about what the foundation does. She proposed an idea to display the quilts among the books that inspired the quilts and maybe have an auction of these quilts if the maker would donate it. Also present from the Lincoln Library Foundation were Carol Conner and Penny Berger.

Vice President, Becky Haynes, introduced our speaker Betty Lenz.

**Minutes:** The minutes of the last meeting were in the Plain Print. There were no corrections, the minutes were approved as printed.

**Treasurer's Report:** The Treasurer's report was in the Plain Print. There were no corrections, the treasurer's report was remanded for audit.

**Announcements:** Judy Lane  
Tonight we welcomed have 13 guests to the guild meeting.

The Chairmen for next year's Refreshment Committee will be Joyce Donlan and Tracy Schrotberger.

A thank you note from the Connie Strope's family was read thanking LQG for helping with Connie's memorial service.

A thank you card was read from the Wagner family thanking LQG for the quilt they received for their daughter when she was at St. Elizabeth's.

Robert Kaufman Fabrics are starting some new things on their web site. Information is on the bulletin board.

Finke Gardens & Nursery, will donate 10% of retail sales on April 13<sup>th</sup> - April 15<sup>th</sup> to IQSC building fund (labor or landscaping services not included).

The Mormon Trail Center will presenting a quilt show May 5 - June 2<sup>nd</sup>. The display will be open daily 9 a.m. to 9 p.m. The Trails Center is located in Florence, Nebraska, (north Omaha) adjacent to the Mormon Pioneer Cemetery on State Street.

The contact person is Loa McLaws. 402-289-4651.

At the Benne Museum in Crete, the Raggedy Ann display continues through June. Sunday afternoons. 1 - 4 p.m.

### New Business:

**LQG Awards:** Sandy Anderson, Judy Lane, and Kate Laucomer announced the recipients.

Life Member Awards were presented to Carroll Dischner and Becky Haynes.

Bright Star Awards were presented to Jo Baxter, Hope Partridge, Kari Ronning, Sonja Schneider, Karalene Smith, and Lois Wilson.

Shining Star Awards were presented to Anita Ahrens, Millie Fauquet, Sheila Green, Lou Lessman, and Carolyn Meter

**Scholarship Committee:** Rose M. Kastl  
This year's committee members were Rose M. Kastl, Kathleen Moore, and Marion Wright.

The committee had received anonymous donations totaling \$200, some of which were given in memory of Connie Strope, to be used for this year's scholarship. That amount added to the \$500.00 gave us a total of \$700.00 to award. The money was divided between three worthy recipients:

Jonathan Gregory, who applied for financial help to attend the AQSG conference in Lowell, MA in October 2007 to present his research on the life and artistic development of Rose Kretsinger.

LynDee Lombardo who applied for financial help to assemble a prototype Teacher' Quilt Education Trunk which will be the model for other related trunks which the IQSC plans to provide to Nebraska area teachers. LynDee plans to use the money to purchase items for inclusion in the trunk.

Wendy Ray who applied for financial help to participate in a study tour of London and Paris to research the influence the European Modernistic Artists have on today's understanding of art. Wendy also plans to attend the Surface Design Conference.

### Old Business:

#### **\$500 Policy**

At the March meeting we proposed an amendment to the Bylaws pertaining to our policy that says the Board may spend up to \$500. For any amount over that, the expenditure must be voted upon by the Guild.

We would like to propose an amendment to our Bylaws to be called Article 12 to read as follows:

The Board is authorized to spend monies up to \$500 on Guild expenses. Amounts over \$500 must be presented to the Guild and put to a vote of the membership.

Any proposal to donate money to any group outside of LQG must first be presented to the Board. The Board would then present the proposal at the LQG meeting and put it to a vote of the membership.

Motion to accept the proposed Bylaw change as was just read by Cindy Weyers. Second by Elizabeth Sterns. Motion passed.

#### **Budget**

The Budget was presented at the March meeting. Copies of the proposed budget were on the chairs. Dani Hecker asked for any questions about the proposed budget. There were none.

A motion to accept the proposed budget by Elizabeth Sterns. Second by Sandy Anderson. Motion passed.

#### **2007 – 2008 Officers**

The Slate of Officers was presented at the March meeting. They are: Judy Lane, President; Cathie Miller, Vice President; Joni Sauter, Secretary; Kim Shelley, Treasurer; Martha Lane, President-elect; Meylonie Schatz and Mary Swinton – Vice Presidents-elect; Bonnie Kucera, Treasurer – elect; and Kate Laucomer, advisor.

There were no other nominations from the floor. A motion to close nominations and accept the slate of officers was made by Elizabeth Sterns. Second by Rosalind Carr. Motion passed.

#### **Bus Trip**

Glenda Johnson reported the bus trip was a success. They went to 6 shops. More than \$9,000 was spent.

#### **Alzheimer's Priority Quilts**

Kate has the Priority envelopes if anyone needs one. She asked if there were any quilts to turn in to bring them to her after the meeting.

### Committee Reports:

#### **Cuddle Quilts**

Anita Ahrens reported all of the layered quilts in the resource room have been finished by someone. Thank you. We have distributed all of the quilts that have already been finished. Anita announced Health and Human Services has invited LQG members to a Volunteer Recognition Ceremony on April 26<sup>th</sup> from 1:00 - 1:30 to come.

*(Continued on page 5)*

(Continued from page 4)

**Santa Socks**

Gloria Smith announced she has received many items , lots of hats and scarves.

**Mini Raffle**

Dana Atteberry announced we raised \$66 tonight. Table topper donated by Dorothy Chapman, won by Susan Russell Johnson; Traditional Quilts to Paper Piece donated by Joni Sauter, won by Genie Sullivan; Book and fat quarters donated by the Quilted Kitty, won by Leona Pepper; Batting and Slotted Ruler donated by Lynn DeShon, won by Lora Yardley.

**Friendship Blocks**

Martha Lane had 24 sets of blocks which were won by Annie Fingeret. Martha showed the sample for next month's friendship block.

**Ricky Tims' Seminar**

Sheila Green reported the deadline to sign up is May 14<sup>th</sup>, Sheila announced tickets for the evening concert for a cost of \$15.00 will be sold as long as space is available.

There was no more old business, so the meeting was adjourned to Show and Tell.

*Minutes submitted by  
Sharlee Green  
LQG Secretary*

*Second notice*

**Membership  
Renewal Time**



It's time to pay dues for the 2007 – 2008 Guild year! We're trying something new this year. We will have sheets of labels posted in the hallway.

1. Find your label.
2. Get a membership form from a volunteer.
3. Stick the label to the membership form.
4. Check over the label to make sure your information is correct. If the information is not correct, write the correct info on the form.
5. Write your check and turn it and your form in at the Membership table.
6. If you don't have your checkbook with you, take the form home with you and mail it in before July 1st. **If you wait until September to pay, your name will not be included in the LQG Directory and will not receive the September Plain Print newsletter.**

**LOVE TO QUILT**  
Yours or Mine on a PC QUILTER  
**10% discount on your first quilt**

Barb Andersen-Fossler      6925 Francis Street  
402-467-1788                      Lincoln, NE 68505

**Ricky Tims'  
Super Seminar  
August 16-18  
Omaha's Holland  
Performing Arts Center**



May 14 is the deadline to register for the Seminar and receive the discounted price of \$159. Motel rooms are still available at the Quality Inn Suites in Council Bluffs, also at a discounted price!

If you aren't able to attend the entire Seminar, tickets can be purchased for Ricky's Friday evening Piano Concert, "The Music In My Quilts Concert"! The concert will be held on Friday, August 17 at 7:30pm, tickets are available at \$15 each. Send payment to me by the May 14th deadline and I will order the tickets in advance for you. If you are already registered for the Seminar, the concert is included.

Ricky Tims has successfully blended two diverse passions into one very unique and interesting career. Ricky pieces together his talents as a pianist, composer, arranger, quilter, inspirational storytelling, and comedian to present an unforgettable, multi-media performance. The concert is enlightening for quilters and non-quilters alike. Invite your friends and family. Also available the eve of the concert will be an exhibition of more than forty quilts and the RTQS Store filled with hand-dyed fabrics, books, patterns, music CDs, and instructional DVDs.

As of today, we have 55 of us attending the Seminar and an additional 14 attending the Piano Concert!

Contact Sheila Green 483-0453 for additional information!

We Are Proud to be an Official Promotional Partner for the

**RICKY TIMS'**  
*Super* **QUILT SEMINARS**

With Special Guests  
**Alex Anderson  
and  
Libby Lehman**

**August 16-18**  
Holland Performing Arts Center  
Omaha, NE

Hosted by the  
**Omaha Quilters Guild**

Everyone attends *all* sessions  
with *all* three instructors!

Information and registration brochures available  
at guild meetings, or online at  
**www.rickytims.com**

**The Ultimate Learning Experience for Quilters!**

## Congratulations to these Award Winners



**Life Members**  
Becky Haynes and  
Carroll Dischner  
(left to right)

(photos courtesy by Kathi Kinnaman)



**Bright Stars** (left to right)

Sonja Schneider, Kari Ronning, Jo Baxter, Hope Partridge,  
Karalene Smith, Lois Wilson



**Shining Stars** (left to right)

Anita Ahrens, Millie Fauquet, Carolyn Meter, Sheila Green, Lou Lessman

## Discover Nebraska

Thanks to the volunteers who have made Discover Nebraska possible this year:

**Lead Presenters:** Sheila Green, Jean Ang, Midge Reeder, Dorothy Neill, Lucile Lenz, and June Reta.

**Classroom Helpers:** Sharlee Green, Ken Green, Sally Gowin, Brenda Carlson, Shirley Chaffin, Leah Olson, Dorothy Heidemann-Nelson, Jan Gustafson, Jack Chaffin, Linda Gapp, Sandy Anderson, Jan Gustafson, Phyllis Horn, Gordon Bair, Carolyn Meter, and Ellie Chambers.

We had a record breaking year! These men and women have visited 35 elementary schools with 99 classrooms, about 2,000 fourth graders! We have held training sessions to enable the program to spread across the state to ladies from Sidney, Bartlett, and Wahoo. For more information, go to our website [www.discovernebraska.org](http://www.discovernebraska.org)



Sheila Green, Chair

## "Cut-Up" Friendship Blocks

Martha Lane and Donna Welte have been brain-storming to come up with a new "twist" in the monthly *Friendship Blocks*. This idea is simple and won't require a pattern. Just follow these instructions.

This is a continuation from the blocks that were made last month. For those who won, you already have the starting stage to these next steps.

**Finishing Half Square Triangles in 2 sizes.** Trim one block to 6½" square. Set aside.

Fold second block in half with the light fabric on top



Draw a line down the center



Stitch ¼" on each side of the drawn line

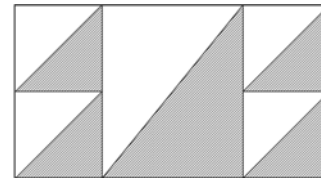


Draw two more lines. Cut on the drawn lines (3 cuts)



There will now be four (4) half square triangles. Open each and press to the darker fabric. Trim them to 3½" square. Sew two (2) half square triangles together.

Repeat with the other two. Sew these to each side of the 6½" square block that was set aside.



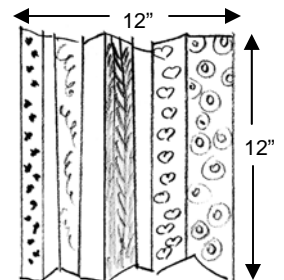
Finished block

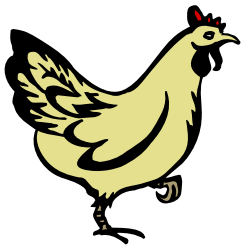
## April String-pieced Block

Sew strips of fabric in various widths and colors that are at least 12" long together. Your strips do not need to be the same width across the entire strip length, variety is acceptable. Continue to add strips until you reach a width of 12" (12" x 12" is the basic size we are looking for, a little larger or smaller won't make a big difference.) It is not necessary for you to trim your blocks before turning them in. You will get one chance to win for each string-pieced square turned in at the May 14th meeting.

To finish your string-pieced blocks. Cut your string-pieced blocks down to 10" (ten inch) square. Since the blocks are oversized, you can choose which part of the block appeals best to you. Cut your ten-inch square on the diagonal twice, resulting in four triangles. Alternate squares are also cut at ten-inches and cut on the diagonal twice. Arrange string pieced units and alternate units in a pleasing design and sew together.

**NOTE:** I opted for my alternate units to be one fabric, thereby creating a more soothing look. You might try using a variety of fabrics or maybe all your alternate pieces will be from the same color family such as a variety of red fabrics.





## Attention Free Range and Lincoln Chicks

### Announcing the 22<sup>nd</sup> Annual Quilters Fall Retreat

Our theme for 2007 is "Remembering, Sharing, and Finishing"

This year our goal is to help you finish some of those projects from past years' retreats (or other UFOs in your closets) or start something new. The camp chef will be preparing all of our meals so there will be plenty of time to sew, laugh, eat, talk, and just spend time with friends – old and new.

**When:** October 12-14, 2007 – Friday through Sunday

**Where:** 4-H Camp near Gretna, Nebraska

**Cost:** \$90 per person

#### Registration Information:

The retreat is limited to the first 80 registrations postmarked **on or after September 1, 2007** (earlier postmarked envelopes will be returned unopened). Groups may send in their registrations together (maximum 10 people per envelope. Please be sure to include the registration fee for everyone in your envelope).

If you have questions please contact Karalene Smith at 477-4788 or Shelly Burge at burgequilt@windstream.net. To register, fill out the form (one per person) and send it along with a business size, self-addressed, stamped envelope (one per person), and a check (can be one or multiple checks) made payable to LQG for \$90 per person to:

Shelly Burge  
5701 S. 112<sup>th</sup> Street  
Lincoln, NE 68526  
Attn: Fall Quilt Retreat

#### 2007 Fall Quilters' Retreat – Gretna, Nebraska

Name: \_\_\_\_\_

Address: \_\_\_\_\_

City, State, Zip: \_\_\_\_\_

Phone #: \_\_\_\_\_

E-mail: \_\_\_\_\_

I would like to bunk with: \_\_\_\_\_

\_\_\_\_\_

\_\_\_\_\_

Check one in each of the following lines:

I prefer a top bunk: \_\_\_\_\_ I prefer a bottom bunk: \_\_\_\_\_

I would like to sign up for a massage: Yes \_\_\_\_\_ No \_\_\_\_\_

### Lost and Found

Some patterns were left behind at the February meeting: Flower Basket, Delectable Plaid Mountains, Patriotic Angels, and more. Please call Judy Lane to claim (466-4541).

## 2007 LQG QUILT CHALLENGE

**Congratulations and well done** to all of the challenge quilt makers!! The quilts showed much creativity, time, and talent. The exhibition at the April meeting was a real treat for all the viewers. At last, the identities of the celebrity judges were revealed: *Linda Hillegass* (co-owner of Lee Booksellers), *Jim McShane* (English Professor Emeritus from UNL), and *Willa Smith* (a newer LQG member).



The judges presented prizes to the following guild members: **1st place to Chris Taylor** for her quilt, "A Common Thread", based on The Poisonwood

Bible by Barbara Kingsolver; **2nd place to Lois Wilson** for her quilt, "Yes, Maud, You Can Have It Both Ways",



based on The Bedspread by Sylvia Fair; and **3rd place to Sandy Anderson** for her quilt, "Merlin's Crystal Cave", based on The Crystal Cave by Mary Stewart.

**The Viewer's Choice award** was presented to **Phyllis Higley** for her quilt, "Symptoms in Some Cephalopods Approximating Apoplexy", based on Sweet Thursday by John Steinbeck.



All the quilts were fantastic. We have asked all the challenge quilt makers to bring their quilts to the next meeting for show and tell. Guild members and guests expressed interest in learning

who made each quilt. So, quilt makers, please do bring your quilts for show and tell at the May meeting!!

The level of participation in this literary quilt challenge was noteworthy. You have made some significant quilts. The invitations to exhibit them at our local libraries and at the 2008 LQG Quilt Show are an expression of how interesting and creative these quilts are to the viewing public.

Thank you again and again from the Challenge committee!

*The Challenge Committee*

Judy, Elizabeth, Joyce, and Rosalind



Lincoln Quilters' Guild  
 P.O. Box 6861  
 Lincoln, NE 68506

## 2006-2007 LQG Officers

<b>President</b>	Kate Laucomer
<b>Vice-President</b>	Becky Haynes
<b>Treasurer</b>	Danielle Hecker
<b>Secretary</b>	Sharlee Green
<b>President-Elect</b>	Judy Lane
<b>Vice-President Elect</b>	Cathie Miller
<b>Treasurer-Elect</b>	Kimberly Shelley
<b>Adviser</b>	Linda Loker

## REMEMBER: Membership dues renewal time!

Professional Machine Quilting  
 By Gloria J. Smith

402-489-0062

windyourbobbin@netzero.com



PAID ADVERTISEMENT

*The Quilted Kitty*



Fast, friendly service • Quality fabrics and supplies  
 Block of the Month kits • Strip Club

Visit our website and sign up for our online newsletter  
 OR stop in and visit us at our new location

4300 S. 48th Street

Lincoln, NE 68506 • (402) 420-9292

[www.quiltedkitty.com](http://www.quiltedkitty.com)

PAID ADVERTISEMENT



Cosmic Cow

Bright, **Bold** and Fun  
**FABRICS**

Also Hand dyed and Hand painted fabrics

Come in for the **COLOR** – Stay for the **FUN!**

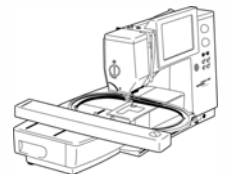
6136 Havelock Avenue • Lincoln, NE 68507 • (402) 464-4040

Open: Monday – Saturday 10-5 • Thursday til 8 pm

PAID ADVERTISEMENT

**BERNINA**  
 Sewing Studio

- Bernina Sewing and Embroidery Machines and Sergers
- BSR-Bernina Stitch Regulator
- Horn Sewing Cabinets
- Machine Repair



Nothing Sews Like A Bernina. Nothing.  
**BERNINA**

1501 Pine Lake, #12 • Lincoln, NE 68512

402-423-3108

[www.berninabuzz.com](http://www.berninabuzz.com)

PAID ADVERTISEMENT